

HOSPITALITY

2020



OCT Resort Hotel

New Waterpark/ Theme Park Resort
170 Keys, 20K M2, 1.5 Ha. Hotel Site
OCT Hotels & Resorts
Hengyang, Hunan, CHINA
2023

WINNER - Invited Design Competition

Concept Designer Team Leader

2017



Hanwha Resort Master Plan

New Flagship Resort Development
800 Ha.
Hanwha Hotels & Resorts
YangPyeong, South Korea

Invited Design Competition - Runner-Up

Concept Designer Team Leader

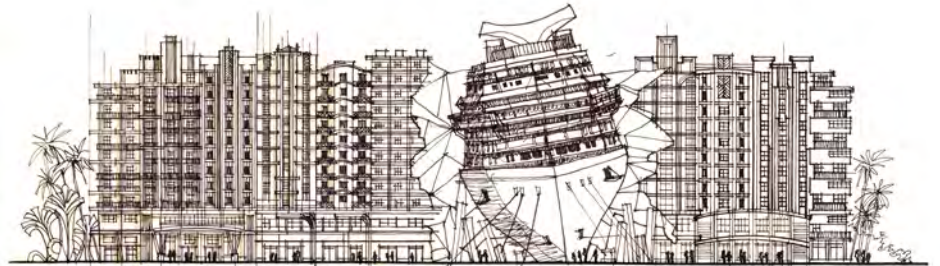
HOSPITALITY



2016

Royal Country Club Resort Master Plan
Concept Masterplan for Expansion of Existing
Golf Course Property
521 Ha.
Yao The International Development Co., Ltd.
Taipei, ROC

Concept Designer Team Member



2015

Dreamworks Resort Prototype Madagascar
Architectural Proof of Concept for Urban and
Low-rise Resort Options
Sites Vary
The Hettema Group/ Dreamworks

Concept Designer

HOSPITALITY



2008

Hae un dae Beach Resort
New Destination Resort Development
Busan, SOUTH KOREA
\$500M, 1M SF
City of Busan

WINNER
Invited International Competition
Concept Designer, Team Leader

2008



Menlo Gateway Hotel
(Autograph Collection- Marriot)
New Hotel Property 250 Keys
3,5 Ac., 195 K sf
Independence Menlo Hotel Owner. LLC
Menlo Park, California
2018

Preliminary Concept Design Team Member
with Jack Highwart

HOSPITALITY

2008

Airport Hotel
New Independent Hotel Development
San Luis Obispo, California
120 K SF
Mr. Hamisch Marshall
2012 (Phase 1)



Concept Design Team Member

2007



Shrek Hotel and Resort
DreamWorks Theme Park, Feature Hotel and
Indoor Water park
Dubai, UAE
5000 K SF (Hotel)
DreamWorks,



Concept Designer- Hotel, with BRC



Crystal Nest Resort
New Hilltop Resort Development
Mang Sang, SOUTH KOREA
400 K SF (Hotel)
Tong Yang Group

Concept Design Team Member

HOSPITALITY

2007

WB Concept Hotel Project
Prototype Study for Franchising
Blue Sky Sessions

Warner Brothers Real Estate



Concept Design Team Leader



2006

Jeju Musuchon Resort
Mixed-Use, 900 Room Hotels, Spa,
120 Condominium Villa Development
Jeju, SOUTH KOREA
150 Acres
Musuchon Corporation, Mr. Jung



Concept Design Team Member

2004

Avila Lodge and Beach Resort
New Multi-Component Resort Development
Avila Beach, California
500 K SF
Rossi Enterprises, Rob Rossi



Concept Design Team Member

2004

Lotte Hotel Busan
Renovation Proposals for Existing Property
Including entertainment venues
Busan, SOUTH KOREA
\$ 5M
Lotte Hotel Busan Corporation

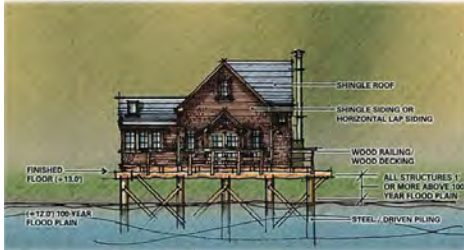


Concept Design Team Leader

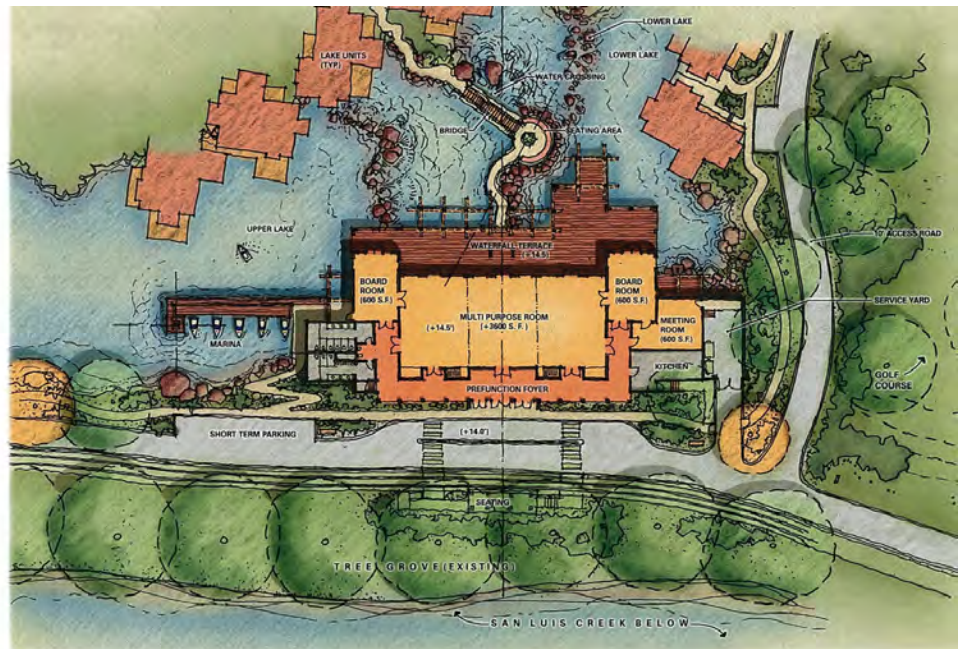
HOSPITALITY



LAKE AVILA CABINS
level 1 plan
+ 1,200 S.F. EACH



CABINS
Elevation
11' 11" 12' 12' 13'



MEADOW LAKE - WATERFALL PAVILION
first floor plan
(+ 8,000 S.F.)



2003

Avila Resort and Conference Center
New Resort and Conference Center
Avila Beach, California
\$ 17.5M, 70 K SF
John Di Vincenzo
(Pending)

Concept Design Team Member
Preliminary Concept Sketches

La Joya del Pacifico
New Town, and Golf Resort Master Plan
Tijuana, MEXICO



Concept Design Team Member
Preliminary Concept Sketches

2003

Sandman Inn
New 120 Room Hotel
Santa Barbara, CA
\$ 17.5M, 70 K SF
Pacifica Hotels, Thomas W. Henry III
2010 (Phase 1- Renovation)



Initial Concept Designs

HOSPITALITY



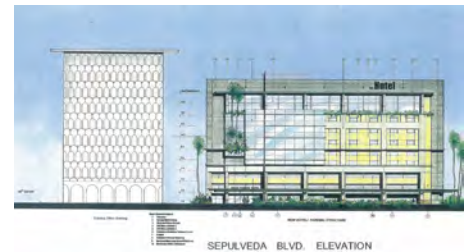
Jamaica Bay Inn

130 Room Addition to Existing
Waterside Hotel
Marina del Rey, CA
\$ 12.5M, 50 K SF
Pacifica Hotels, Thomas W. Henry III
2012

Concept Designer, Project Manager

Century/ Sepulveda Project

New 500 Room Hotel and
Parking Structures near LAX
Los Angeles, CA
\$ 17.5M, 70 K SF
Pacifica Companies, Thomas W. Henry III



Concept Designer, Project Manager

Carlyle Inn

Exterior Renovation of Existing Hotel
Los Angeles, CA
\$250K
Pacifica Hotels, Thomas W. Henry III

Concept Designer, Project Manager

2002

Avila Valley Resort and Spa

New Resort Development
Avila Beach, CA



Concept Design Team Member
Preliminary Concept Sketches



2002

Beverly Pavilion Hotel
 Renovation of Existing 9-Storey Hotel
 Beverly Hills, CA
 \$ 500 K
Pacifica Hotels, Thomas W. Henry III
 (Hotel Property Sold after ARB approvals)

Concept Designer, Project Manager

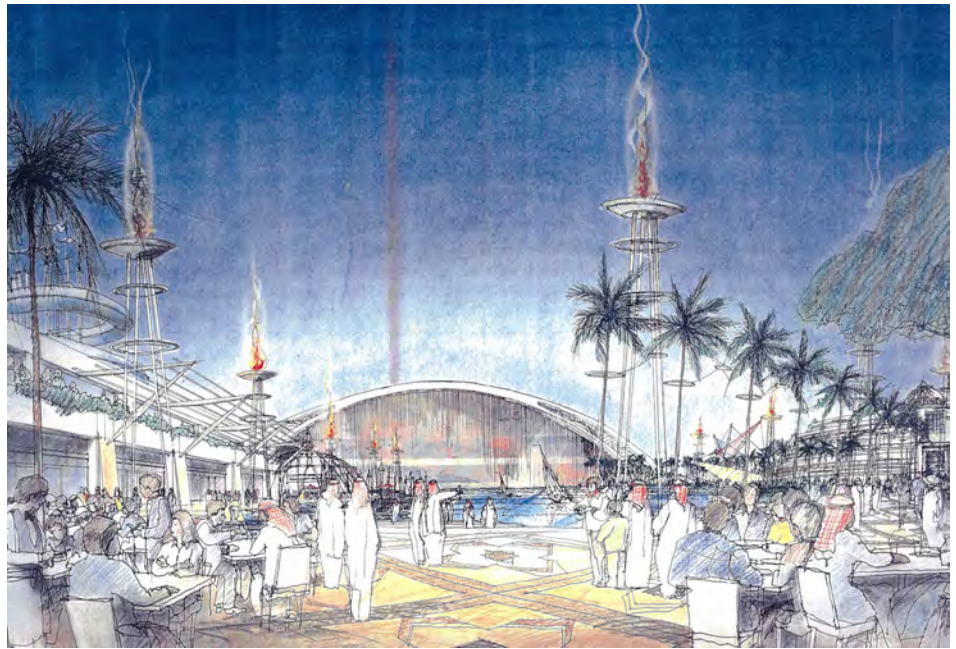
Sheraton Hotel
 New "Urban" Prototype Design
 Various Locations
Starwood Hotels
 2004



Initial Concept Design Team Member

HOSPITALITY

2001



Dream Island Resort
350 Room Hotel, 200 Villas, Harbor front,
Retail / Entertainment Development
Manama, BAHRAIN
\$ 200 M, 45 Ac
CANARAP Acquisitions Corporation,
Mr. Ralph Shearing
2006

Concept Design Team Member

Sunrise Hotel
50 Room Addition to Waterfront Hotel
Redondo Beach, CA
\$ 3.6M, 40K SF
Pacifica Hotels
2005

Concept Designer

2000

the Royal Palm Resort
New 1400 Room Hotel/ Convention Center
Orlando, Florida
\$ 30M, 120K SF
Hilton Hotels Corporation



Invited Competition Runner - up
Concept Design Team Leader

1998

the d'Orsay
160 Room Hotel Mixed- Use Development
Long Beach, California
\$ 20M, 185K SF
Long Beach Properties Assoc.,
Mr. Alain Sarfatti
(Un-built)



Design Team Member
Presentation Drawings

HOSPITALITY



1998

100 E. Ocean Hotel, and Condominium
New Mixed-Use, 21 Story Development
Long Beach, California
\$ 44 M, 400 K SF
Ensemble L.L.C., Mr. Kam Baboff

Schematic Design Team Member
Presentation Drawings

1997

Harrah's Joliet
High Rollers' Lounge
Joliet, Illinois
\$ 1.2.M, 5K SF.
Harrah's Entertainment Inc.
1998



Co-Designer with Susan Jacobsen
Presentation Drawings

Tunica Convention Center
Grand Casino Resort
Tunica, Mississippi
\$ 5.4 M, 60K SF. (Phase 1)
Grand Casinos Inc.
1997



Exterior and Interior Concept Designer

HOSPITALITY

1997

Crowne Plaza Hotel
Existing Hotel Remodel
Minneapolis, Minnesota
\$ 10 M
Crowne Plaza
1998



Concept Designer, Team Member

Coushatta Casino Hotel
250 Room Hotel and
Existing Casino Expansion
Coushatta, Mississippi
\$ 18 M, 175K SF.
Grand Casino Inc., Coushatta Nation
1998



The Grand Casino Coushatta Hotel is an upscale, 3 to star hotel. Forty luxury and two presidential suites are housed in this eight story, 250 room facility. All rooms have stone and porcelain tile finishes in entry and bath areas.

The Coushatta Hotel offers a number of amenities including an indoor pool, exercise room, retail shop, and conference/meeting rooms.

The hotel is connected to Grand Casino Coushatta's gaming facility, three restaurants, a nightclub, and a Kids Quest Childcare facility.

Design Team Member
Presentation Drawings

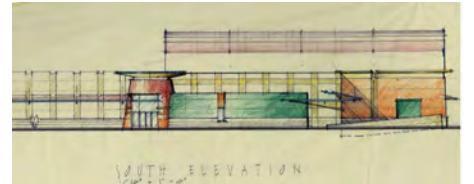
Harrah's Ak Chin
New 250 Room Hotel,
Existing Casino Expansion
Ak Chin, Arizona
\$ 15 M, 145K SF
Harrah's Entertainment Inc.



Feasibility Study, Schematic Design

1996

Avoyelles Entertainment Center
Addition to Existing Casino.
Avoyelles, Mississippi
\$ 30 M, 360K SF
Grand Casinos Inc.
1997



Exterior Concept Design

HOSPITALITY

1996

Grand Resort Hotel Two, and

Theme Restaurant

Grand Casino Resort

Tunica, Mississippi

\$ 15 M, 150K SF

Grand Casinos Inc.



Initial Concept Designs

1981

Garden City Inn

New 120 Room Hotel, 3 Nightclubs

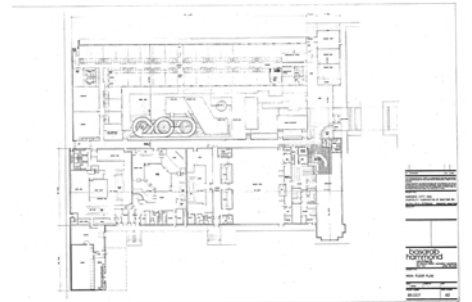
Winnipeg, Manitoba

\$ 9.0 M, 450 K SF

Hospitality Corporation of Manitoba

Leo Ledohoski

1988



Design, Production Team Member

Windsor Park Inn

New Nightclub Addition

Winnipeg, Manitoba

\$ 800 K, 8 K SF

Hospitality Corporation of Manitoba

Leo Ledohoski

1987

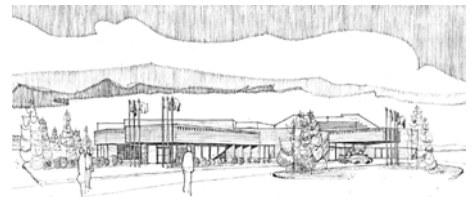


Design, Production Team Member

Bird's Hill Motel

New Suburban Hotel

Bird's Hill, Manitoba



Design, Production Team Member